



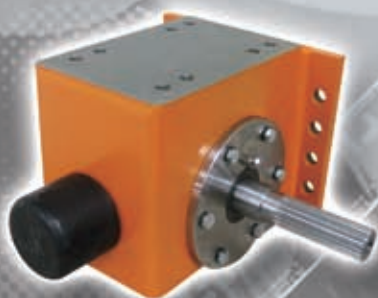
Motor : 0.18KW~30KW
GEARED UNITS : HG2~HG7

CRANE COMPONENTS

End Carriage, Wheel Blocks, Bumper
Hollow Shaft Helical Geared Motors



SERIES
HG/EC
MB
BW



CONTENTS

HG GEAR MOTORS	01
DIMENSIONS OF GEAR MOTORS	04
EXPLODED VIEW	07
END CARRIAGE	10
WHEEL BLOCK	13

GENERAL

With precise machining and accurate assembly, our hollow shaft geared motors reach outstanding performance and high efficiency. The modularized design to connect with different types of gear box and wide range of ratios provides economical solution to meet customers' needs.

MOTORS

1. Design Standards:

Motors comply with the DIN VDE 0530 specification for electrical machinery and VDE 0171 standard for motors with increased safety respect.

2. Enclosure:

The standard motor protection is IP54 according to IEC60034-5 standard.
IP55 is also available on request.

3. Applicable voltage:

The motors are applied to following standard voltage.

50HZ- 220V, 380V, 400V, 415V, 525V

60HZ- 220V, 380V, 440V, 460V, 480V, 575V

- Other voltages and frequencies are available
- Please advise the type of starting (direct-on-line or star-delta starting) when placing orders.

4. Insulation:

The standard insulation class is F but class H is also available on request.

5. Increased safety design:

Degree of motor protection ----- IP54 (standard)

Power range: ----- 0.18KW~30KW

Speed Reducers ----- double, triple, or multi-stage reduction

Conditions of sale

*We reserve the right to change ratings, data, and dimensions without prior notice due to further product improvement.

*Gear Motors must be installed according to our installation instructions and applicable safety regulation.

Ordering example: HG3-22HA/VF90-4C/B 5-42

Order no.:

Nominal reduction ratio:

4, 5, 6, 7, 9, 11, 14, 18, 22, 28, 36,
45, 56, 71, 90, 112, 140, 180, 224

B :

With Brake

BH :

With Brake and Hand release

TH :

With Thermistor

SH :

With Space heater

HG 3	22	HA	/ VF90-4C	/ B	5-38
Mode	Ratio	Mounted	Motor Type		Power Supply

HG2 : 250Nm
HG3 : 600Nm
HG4 : 1100Nm
HG5 : 2400Nm
HG6 : 4500Nm
HG7 : 7200Nm

HA :

Parallel shaft helical geared motor.
With hollow shaft mounted or foot mounted
With parallel key to DIN 6885

HB :

Parallel shaft helical geared motor.
With hollow shaft mounted or foot mounted
With splined to DIN 5480

5-53 :

3 φ -50Hz-525V

5-42 :

3 φ -50Hz-415V

5-38 :

3 φ -50Hz-380V

5-22 :

3 φ -50Hz-220V

6-58 :

3 φ -60Hz-575V

6-48 :

3 φ -60Hz-480V

6-46 :

3 φ -60Hz-460V

6-44 :

3 φ -60Hz-440V

6-38 :

3 φ -60Hz-380V

6-22 :

3 φ -60Hz-220V



1. The material of gears SCM415.
2. The manufacture process of gears by carbonizing hardening to HRC 48~52, and gear-grinding etc...
3. Using ISO VG220 lubricating oil make the working life increased.
4. The precision of gears up to standard of ISO

50/60HZ, 4POLE

MOTOR(KW)	GEAR BOX
0.18	HG2, HG3
0.25	HG2, HG3
0.37	HG2, HG3, HG4
0.55	HG2, HG3
0.75	HG2, HG3, HG4, HG5
1.10	HG2, HG3, HG4, HG5
1.50	HG3, HG4, HG5, HG6
2.20	HG3, HG4, HG5, HG6, HG7
3.70	HG4, HG5, HG6, HG7
5.50	HG5, HG6, HG7
7.50	HG5, HG6, HG7
11.00	HG6, HG7
15.00	HG6, HG7
18.50	HG6, HG7
22.00	HG7
30.00	HG7

50/60HZ, 6POLE

MOTOR(KW)	GEAR BOX
0.18	HG2, HG3
0.25	HG2, HG3
0.37	HG2, HG3
0.55	HG2, HG3, HG4, HG5
0.75	HG2, HG3, HG4, HG5
1.10	HG3, HG4, HG5, HG6
1.50	HG3, HG4, HG5, HG6, HG7
2.20	HG4, HG5, HG6, HG7
3.70	HG5, HG6, HG7
5.50	HG5, HG6, HG7
7.50	HG6, HG7
11.00	HG6, HG7
15.00	HG6, HG7
18.50	HG7
22.00	HG7

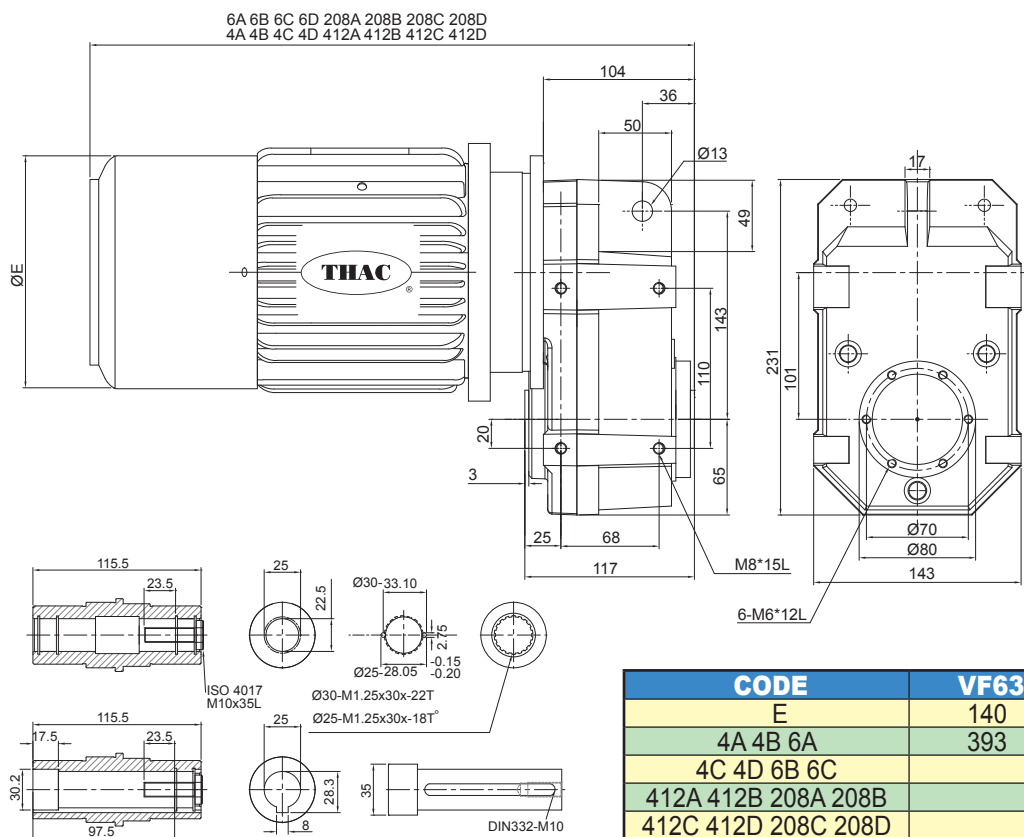
50/60HZ, 4/12POLE

MOTOR(KW)	GEAR BOX
0.18/0.06	HG2, HG3
0.25/0.08	HG2, HG3
0.37/0.12	HG2, HG3, HG4
0.55/0.18	HG2, HG3, HG4, HG5
0.75/0.25	HG2, HG3, HG4, HG5
1.10/0.37	HG2, HG3, HG4, HG5
1.50/0.50	HG3, HG4, HG5, HG6
2.20/0.75	HG4, HG5, HG6, HG7
3.00/1.00	HG5, HG6, HG7
3.75/1.25	HG5, HG6, HG7
5.50/1.85	HG6, HG7
7.50/2.50	HG6, HG7

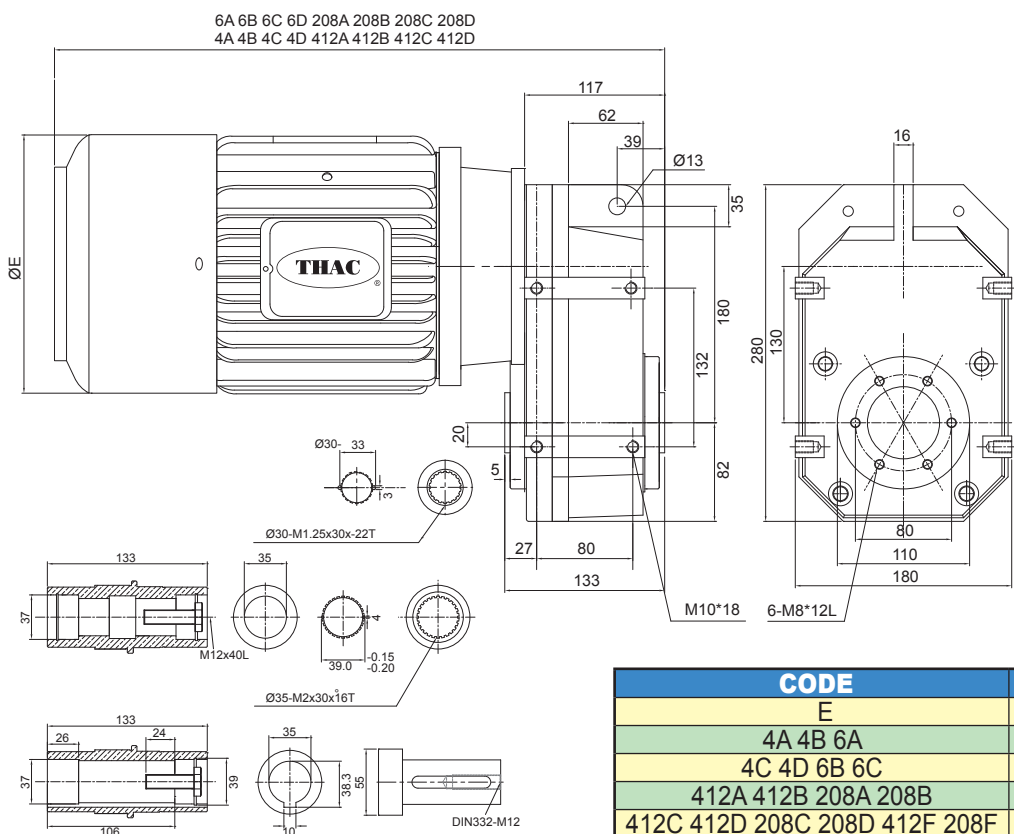
50/60HZ, 2/8POLE

MOTOR(KW)	GEAR BOX
0.18/0.04	HG2
0.25/0.06	HG2
0.37/0.09	HG2, HG3
0.55/0.12	HG2, HG3
0.75/0.18	HG2, HG3, HG4
1.10/0.25	HG2, HG3, HG4, HG5
1.50/0.37	HG3, HG4, HG5
2.20/0.55	HG4, HG5, HG6
3.00/0.75	HG5, HG6, HG7
3.75/1.25	HG5, HG6, HG7
5.50/1.40	HG6, HG7
7.50/1.80	HG6, HG7

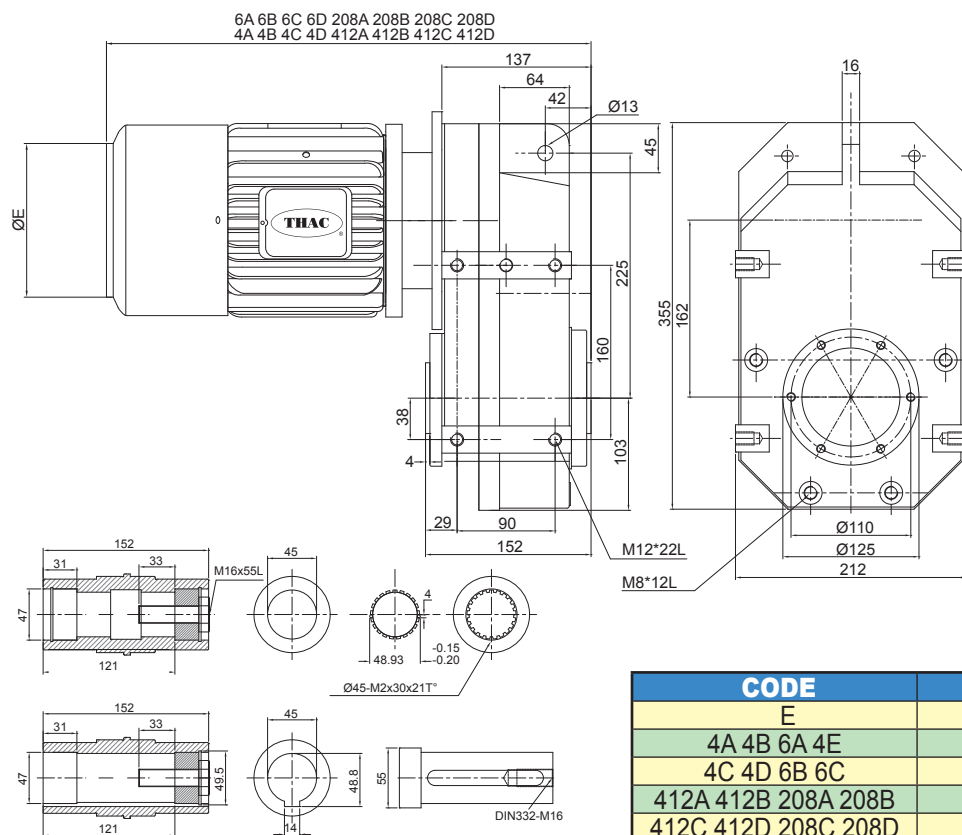
HG2-...HA/HG2-...HB Dimension of Gear Motors



HG3-...HA/HG3-...HB Dimension of Gear Motors

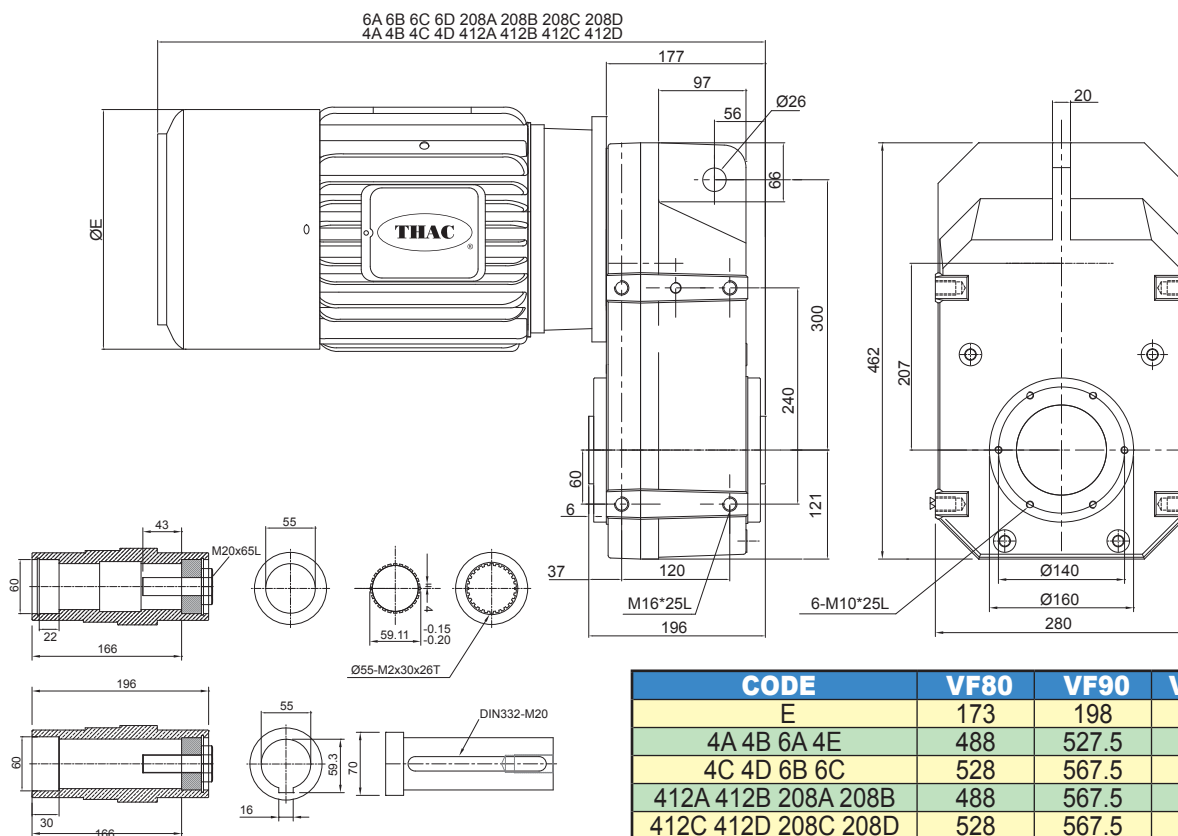


HG4---HA/HG4---HB Dimension of Gear Motors



CODE	VF80	VF90	VF112
E	173	198	232
4A 4B 6A 4E	448.5	488	550
4C 4D 6B 6C	488.5	528	550
412A 412B 208A 208B	448.5		550
412C 412D 208C 208D	488.5	528	

HG5---HA/HG5---HB Dimension of Gear Motors

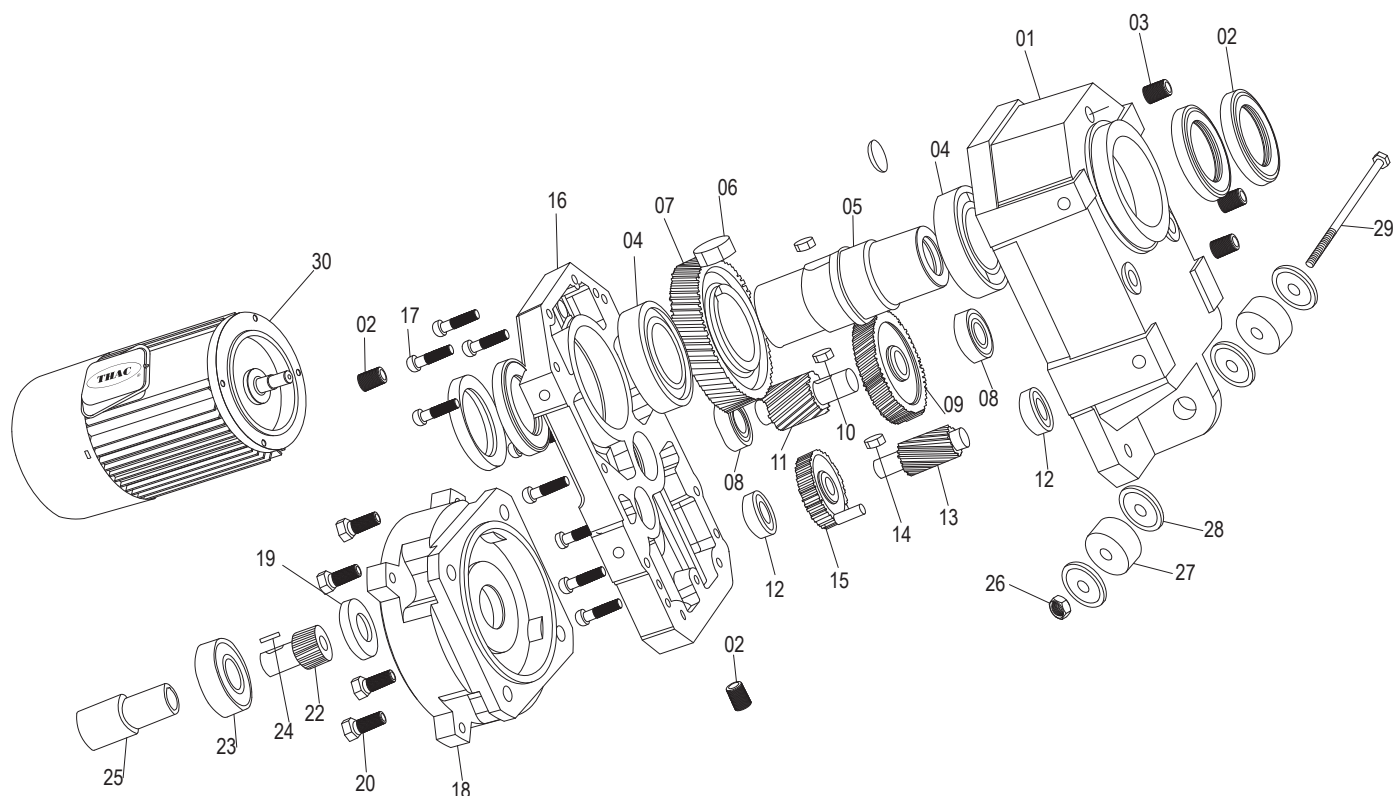


CODE	VF80	VF90	VF112	VF132
E	173	198	232	266
4A 4B 6A 4E	488	527.5	589.5	674.5
4C 4D 6B 6C	528	567.5	589.5	674.5
412A 412B 208A 208B	488	567.5	589.5	674.5
412C 412D 208C 208D	528	567.5		

CODE	VF90	VF112	VF132	VF160
E	198	232	266	315
4A 4B 6A 4E	551	613	685	785
4C 4D 6B 6C 6D	591	613	685	825
412A 412B 208A 208B		613		785
412C 412D 208C 208D	591		685	

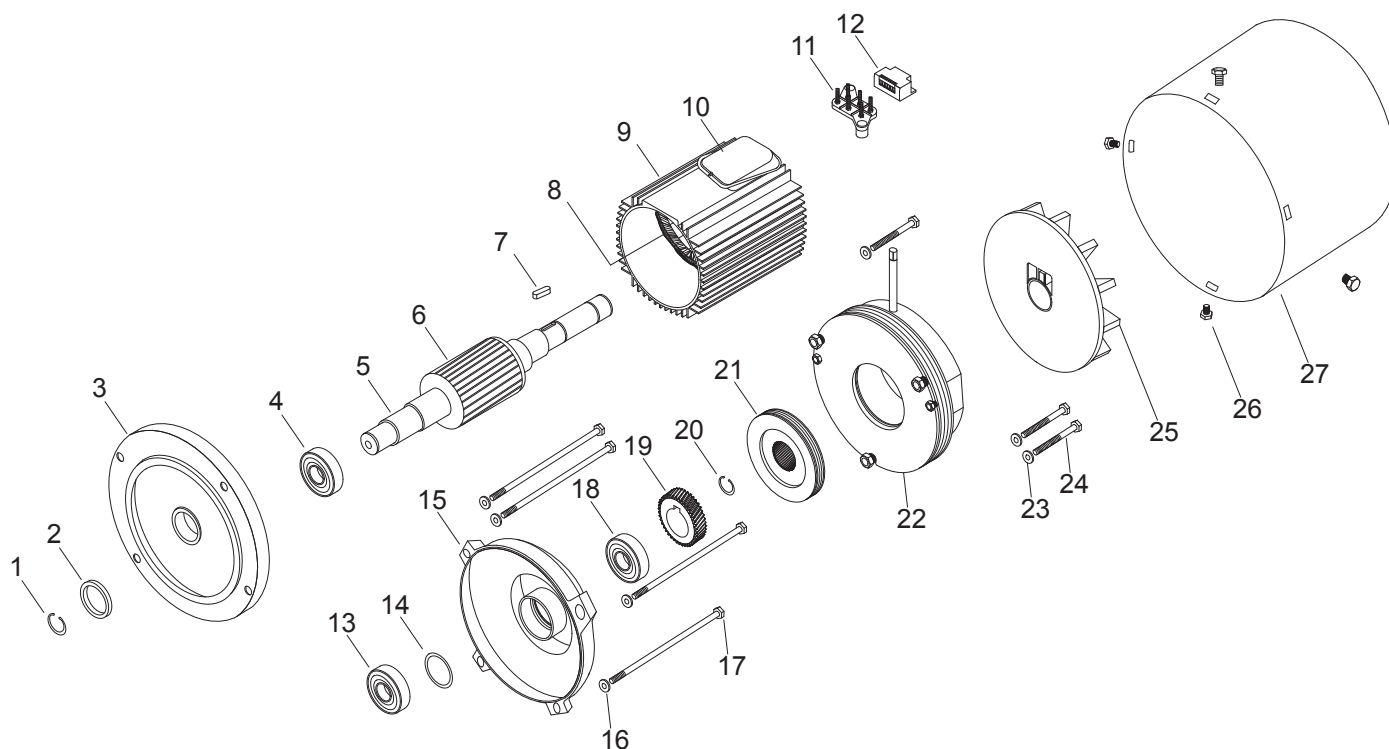
CODE	VF90	VF112	VF132	VF160	VF180
E	198	232	266	315	360
4A 4B 6A 4E	563	625	697	797	927
4C 4D 6B 6C 6D	603	625	697	837	967
412A 412B 208A 208B		625		797	929
412C 412D 208C 208D	603		697		

Exploded View of Gear Motor



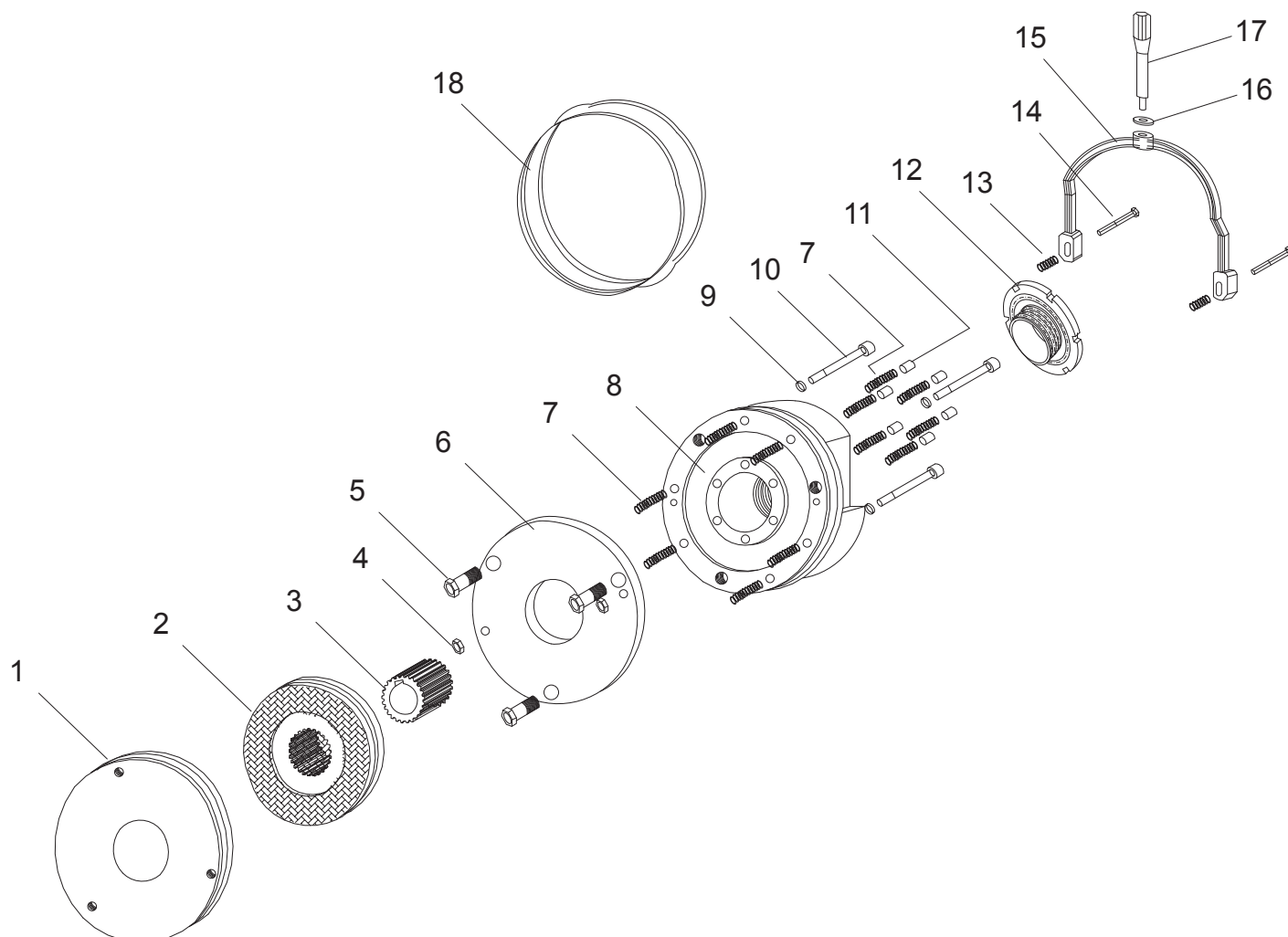
ITEM	DESCRIPTION	Q'TY	ITEM	DESCRIPTION	Q'TY
01	Gear Housing-A	1	16	Gear Housing-B	1
02	Oil Seal	4	17	Connecting Fixed Bolt(Cap.)	9
03	Oil Level Nipple	5	18	Flange	1
04	Anti-friction Ball Bearing	2	19	Oil Seal	1
05	Hollow Shaft	1	20	Connecting Fixed Bolt(Cap.)	4
06	Parallel Key	1	21	C-Ring of Shaft	1
07	Output Gear	1	22	Motor Pinion	1
08	Anti-friction Ball Bearing	2	23	Anti-friction Ball Bearing	1
09	2 ND Gear	1	24	Parallel Key	1
10	Parallel Key	1	25	Motor Shaft	1
11	2 ND Pinion	1	26	Lock Nut (Nylon Nut)	1
12	Anti-friction Ball Bearing	2	27	Rubber Bumper	2
13	1 ST Pinion	1	28	Flat Washer	4
14	Parallel Key	1	29	Torque Arm Bolt (Hex)	3
15	1 ST Gear	1	30	Motor	1

Exploded View of Motor



ITEM	DESCRIPTION	Q'TY	ITEM	DESCRIPTION	Q'TY
01	Shaft Retaining Ring	1	16	Spring Lock Washer	4
02	Oil Seal	1	17	Hex Bolt	4
03	Motor Mounted Flange	1	18	Oil Seal	1
04	Ball Bearing	1	19	Brake Rotor Hub	1
05	Motor Shaft	1	20	Shaft Retaining Ring	1
06	Rotor	1	21	Brake Lining	1
07	Key	1	22	Brake Plate	1
08	Motor Coil with Stator	1	23	Spring Lock Washer	3
09	Housing	1	24	Hex Bolt	3
10	Terminal Box	1	25	Plastic Fan	1
11	Terminal Plate	1	26	Hex Bolt(With Washer)	4
12	Rectifier	1	27	Fan Cover	1
13	Ball Bearing	1			
14	Weave Washer	1			
15	Cap	1			

Exploded View of Brake



ITEM	DESCRIPTION	Q'TY	REMARK
01	Mounted Flange	1	
02	Rotor with Lining	1	
03	Rotor Hub	1	
04	Nut	2	Option
05	Adjuster Air Gap Tube Screw	3	
06	Armature Plate	1	
07	Compression Spring	12	
08	Stator with Coil	1	
09	Spring Washer	3	
10	Connecting Fixed Bolt	3	
11	Round Bar	6	
12	Adjuster Torque Nut	1	
13	Compression Springs	2	Option
14	Connecting Fixed Bolt	2	Option
15	Hand Release Body	1	Option
16	Spring Washer	1	Option
17	Hander	1	Option
18	Seal	1	Option



WARNING:

The equipment shown in this catalogue is intended for industrial use only and should not be used to lift, support, or otherwise transport people, or to suspend loads over people.



TAIWAN HOIST AND CRANE CO., LTD.

No. 57-18, Shanxia, Shandong Village, Zhongli City,
Taoyuan County 320, Taiwan (R.O.C.)

Tel: +886-3-4984188 Fax: +886-886-3-4984198

E-mail: thac@taiwanhoist.com.tw

<http://www.taiwanhoist.com.tw>

Distributed By: